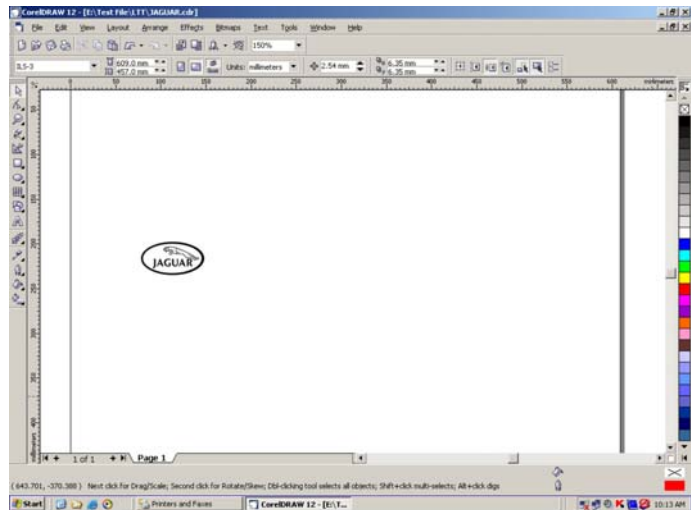


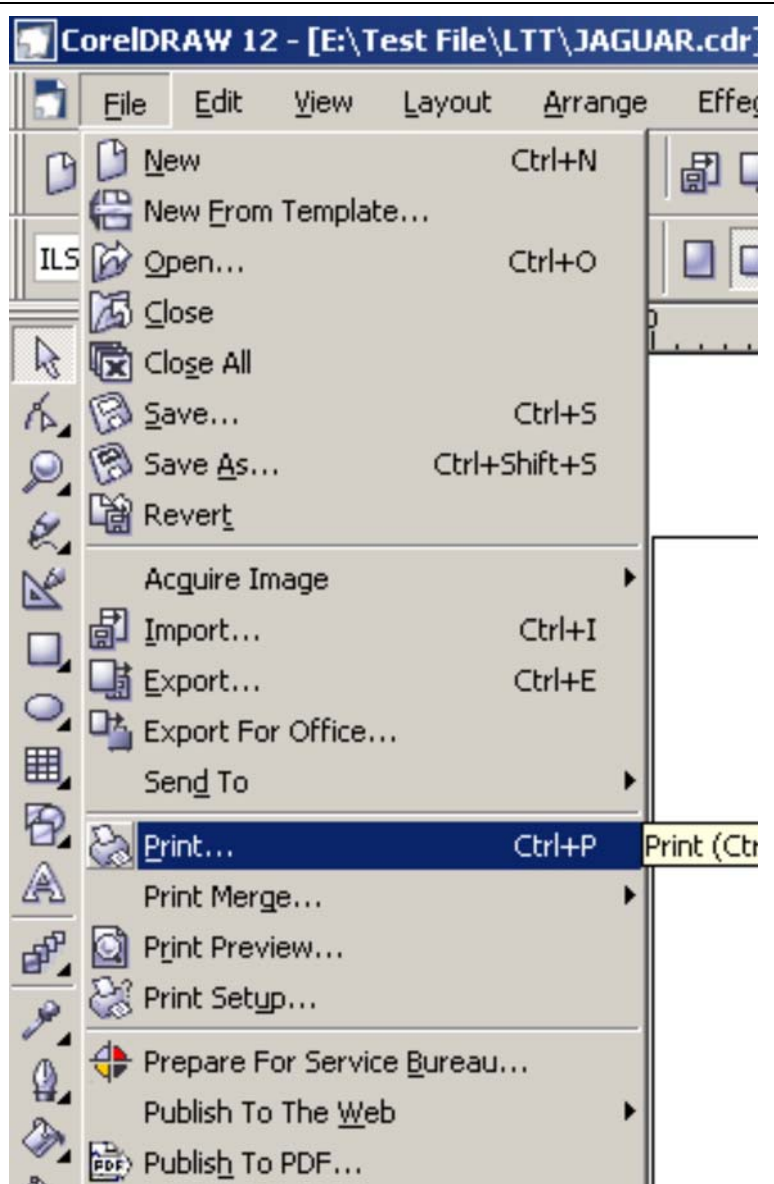
Make a PRN file and send it to ILS machine

Draw some graphic with CorelDraw software.

Now the version of CorelDraw is 12th.



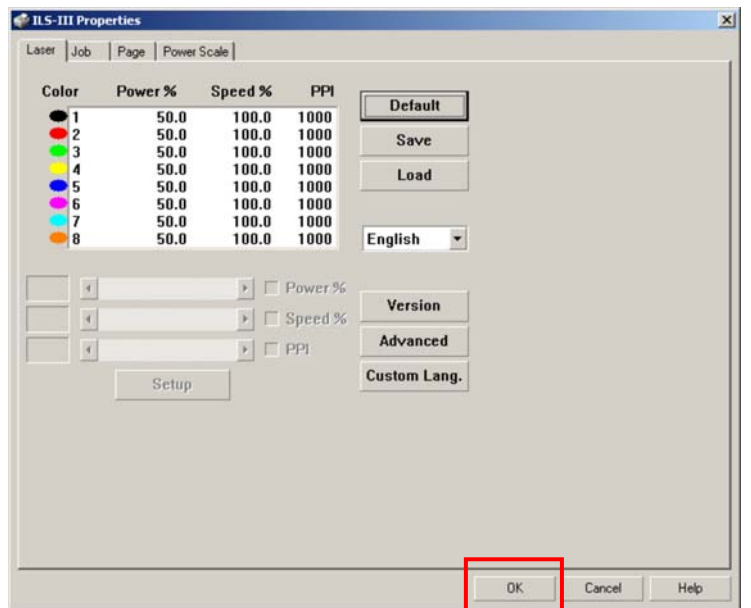
Go to "File/Print...".



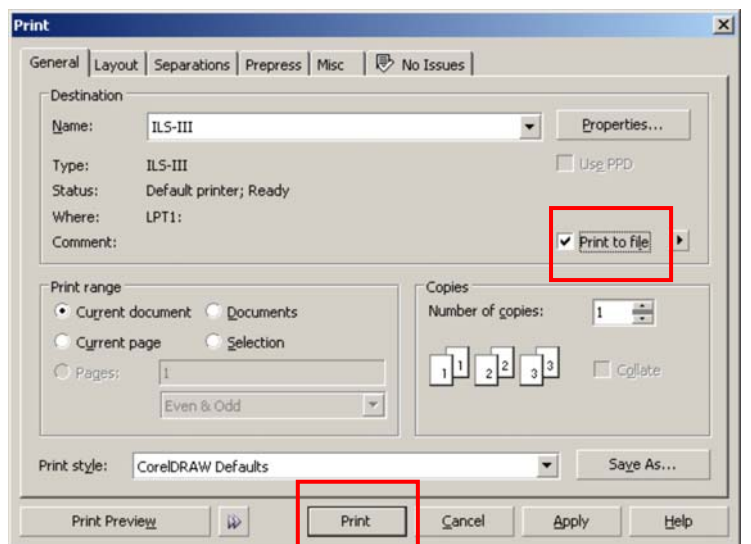
Press the “Properties...” button.



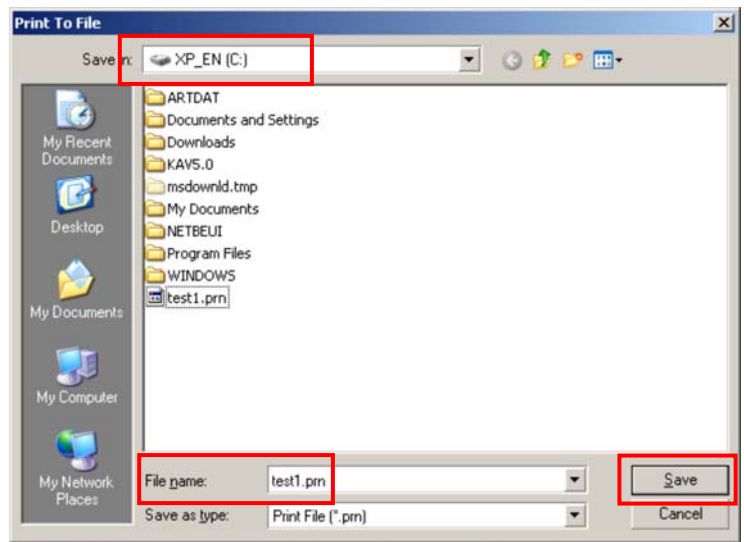
Set all settings and press “OK” button.



Select “Print to file” and press “Print” button.

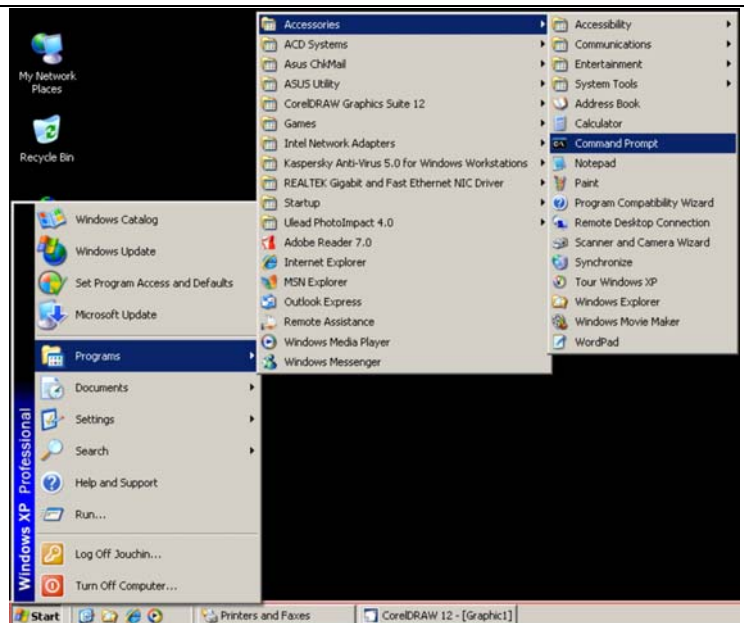


Select a Disk or folder to save the PRN file.
Now I save the file to “C” disk.
Give it a name.
Now I named it – test1.prn.
Press “Save” button.

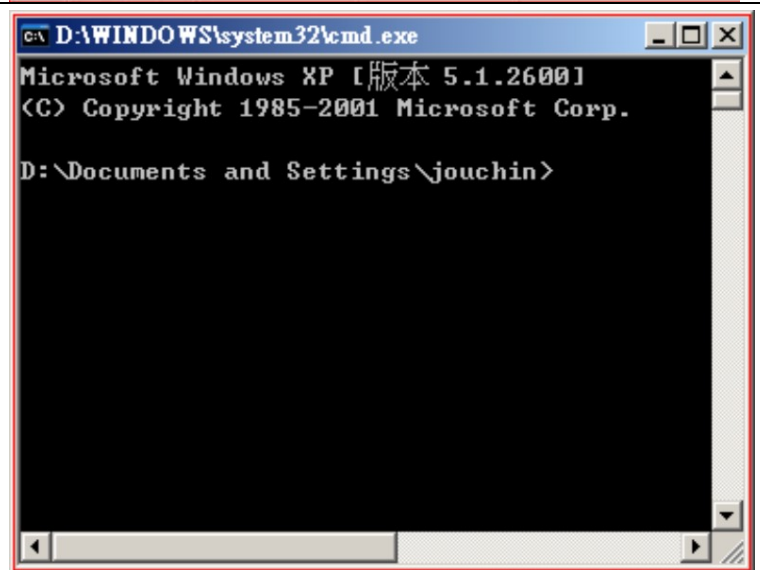


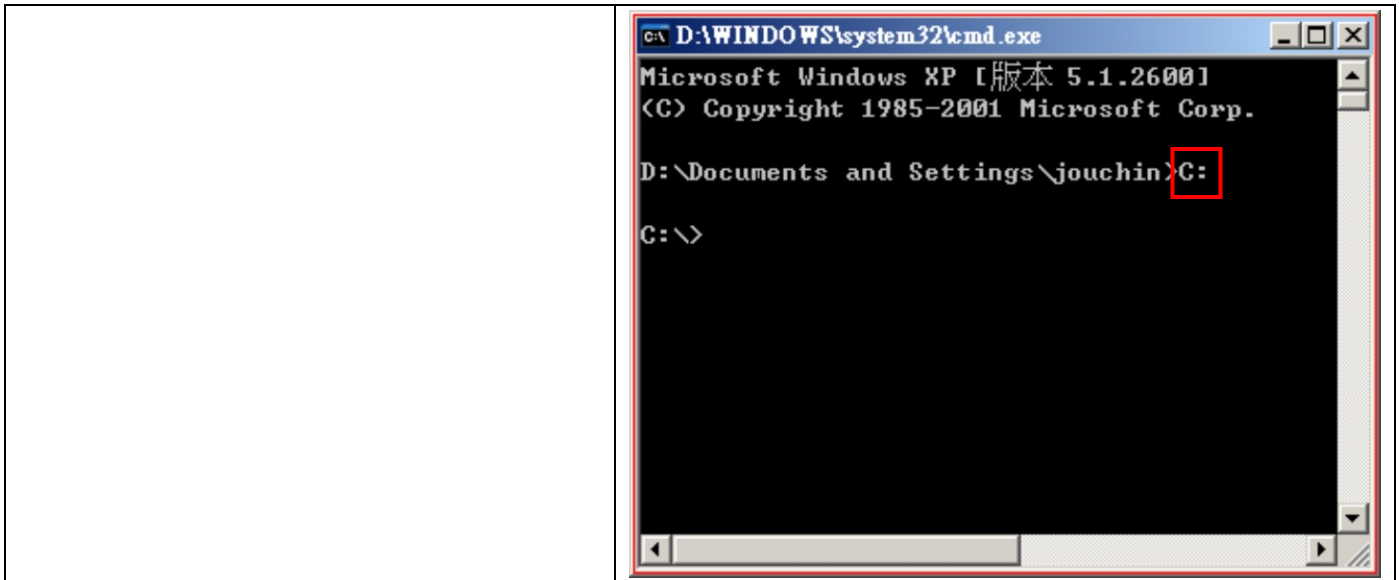
Switch on the ILS machine and connect print cable well as possible as you can.

Go to
“Start/Programs/Accessories/Command Prompt”.

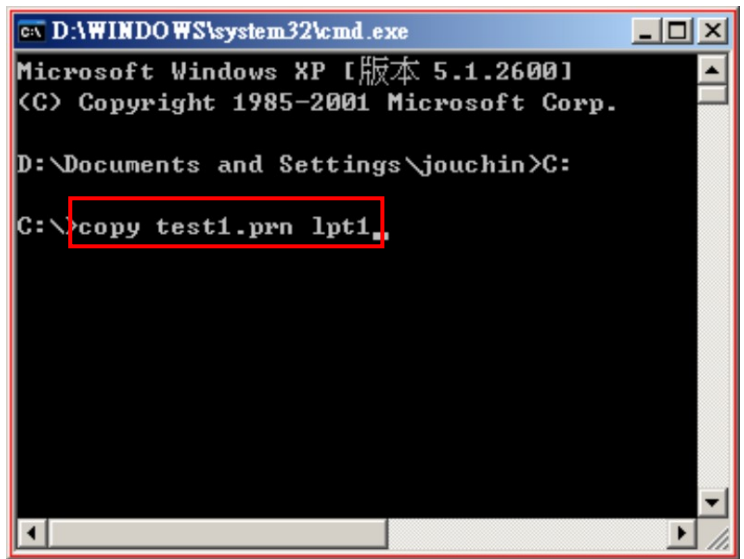


Go to Disk C (type “C:” then press “Enter” button) .





Type “copy test1.prn lpt1” then press “Enter” button) .



Do the job.

End