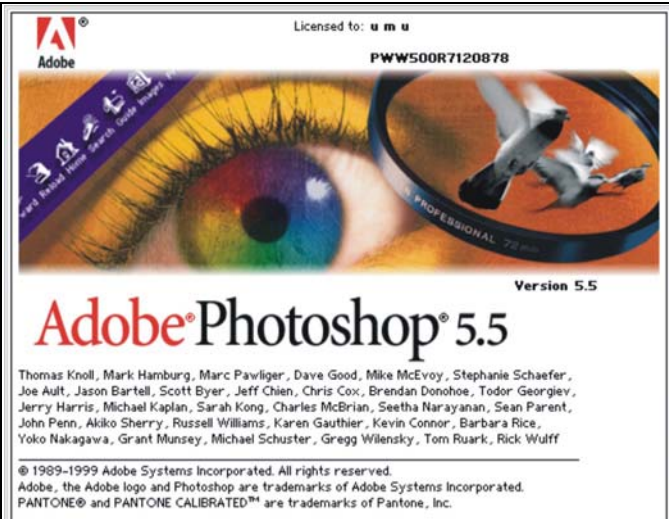
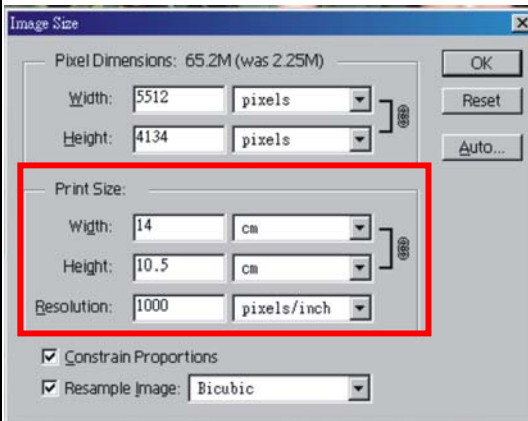


Transfer The Bitmap Image - Photoshop

1. Open an exist image on Photoshop.



2. Go to “Image”, then click “Image Size”.
3. Adjust the image’s resolution, such as **1000 pixels/inch**.
4. Set “Print Size”, and key in the data you need.
5. Press “OK” button.

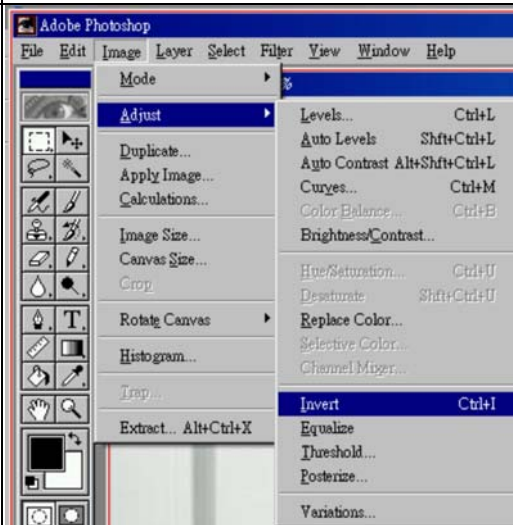


Transfer The Bitmap Image - Photoshop

6. Go to “Image”, select “Mode”, and click “Grayscale”



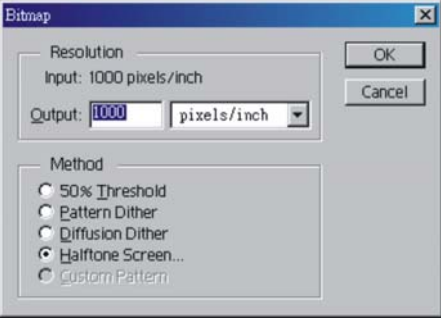
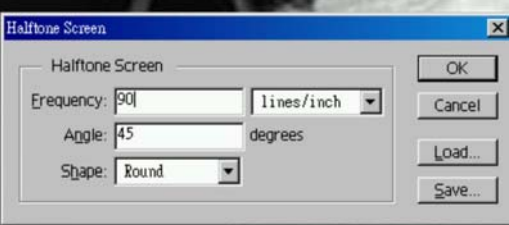
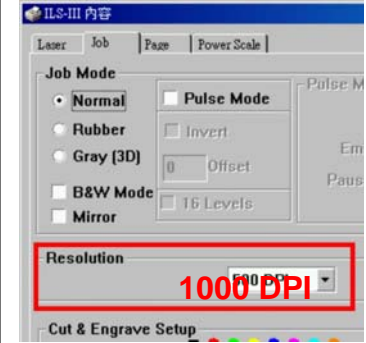
7. If you want to engrave the picture on acrylic, please click “Invert” to invert the image.



8. Go to “Image”, then “Mode”, click “Bitmap”.



Transfer The Bitmap Image - Photoshop

<p>9. Select “Halftone Screen”, then press “OK” button. ※Output:1000 pixel/inch.</p>	
<p>10. Adjust Frequency to 90 lines/inch. 11. Adjust Angle to 45 degrees. 12. Adjust Shape to “Round”, then press “OK” button.</p>	
<p>13. Save the transferred image and open it with CorelDRAW, and print the file to ILS machine.</p>	
<p>14. Attention: the image’s resolution (on above item 3) has to be exactly the same as the setting on ILS print driver.</p>	
<p>End.</p>	