

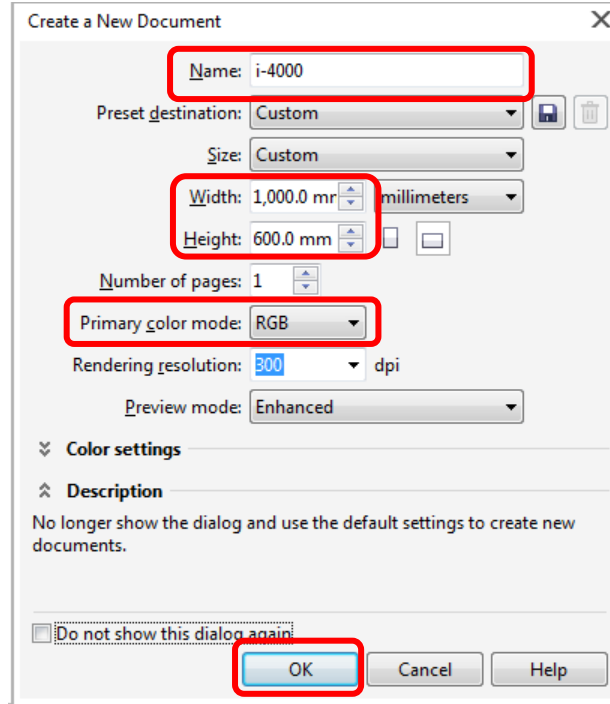


Title : CorelDRAW basic settings

Content:

1. File/New

Setup the page size to fit your machine working area.



2. Color setting

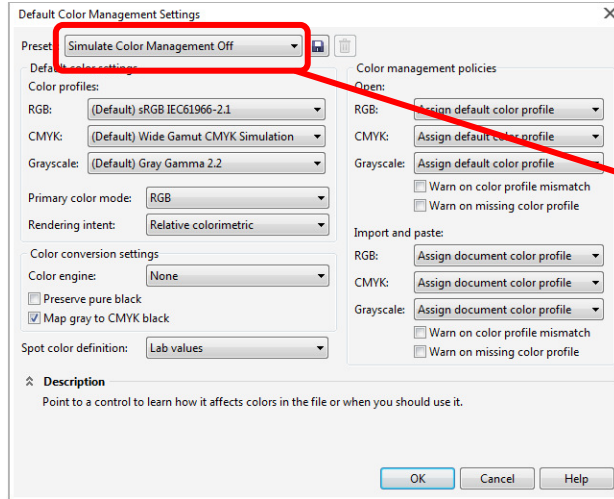
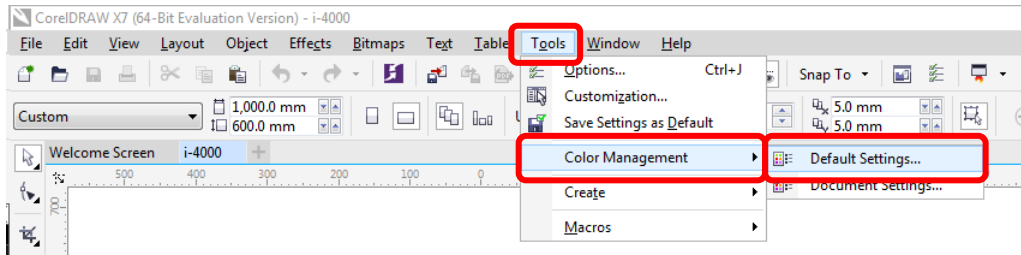
Laser printer driver defines eight colors as the following chart. You must use these same definitions in your graphics program. If your color definitions are different, the printed results may be unpredictable. It may happen wrong parameter mapping or wrong sequence cutting or engraving.

COLOR	RGB		
	RED	GREEN	BLUE
BLACK	0	0	0
RED	255	0	0
GREEN	0	255	0
YELLOW	255	255	0
BLUE	0	0	255
MAGENTA	255	0	255
CYAN	0	255	255
ORANGE	255	128	0

The following steps will show you how to change the default settings for CorelDRAW.

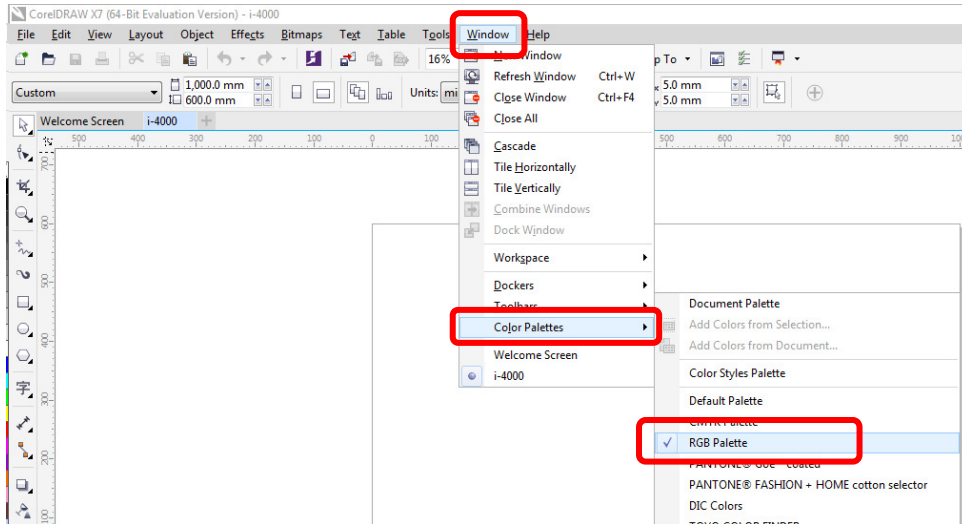


Go to Tools/Color Management/Default Settings...



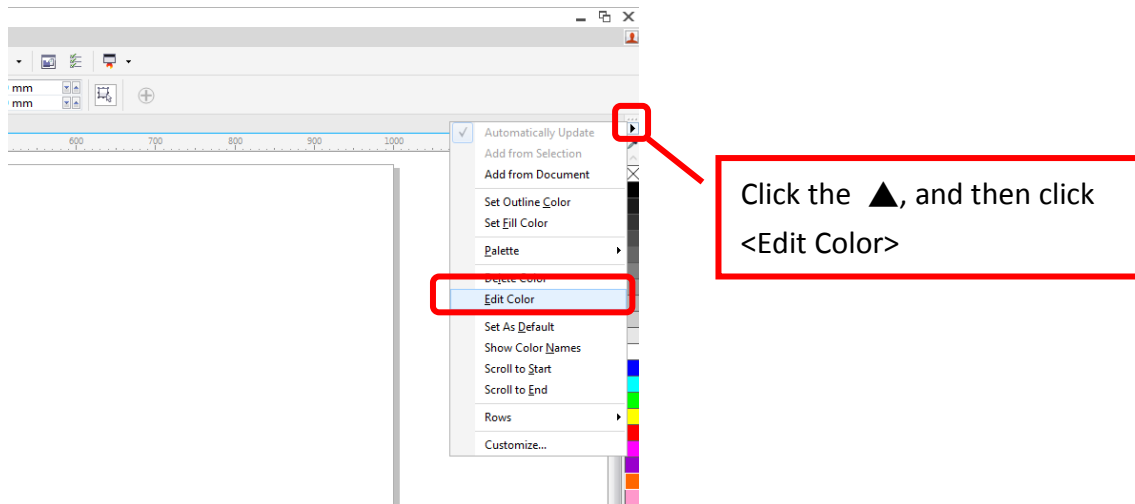
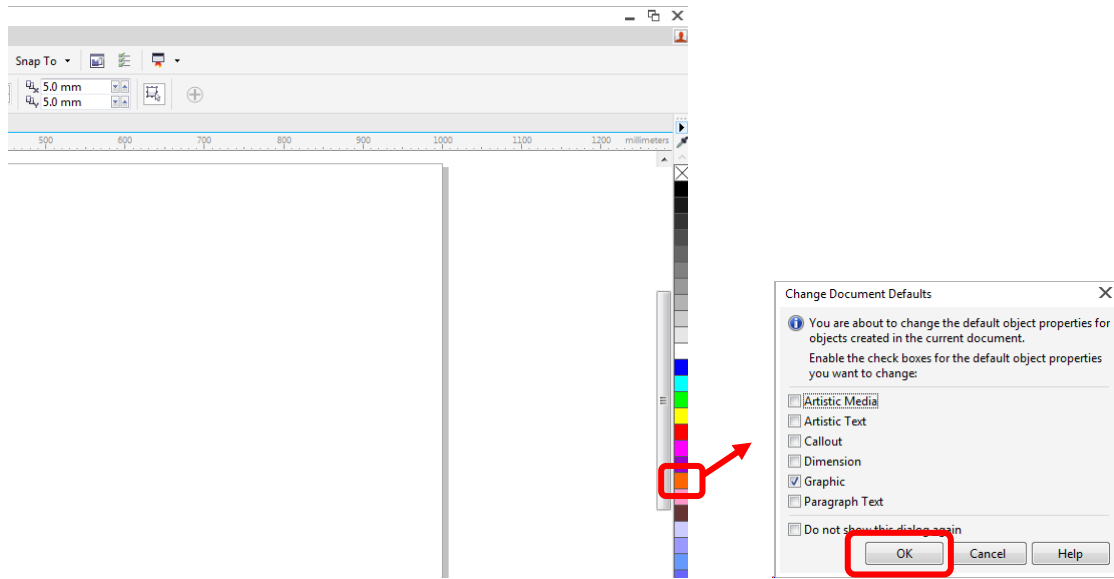
Change the settings to <Simulate Color Management Off>

Go to Window/Color Palettes, check the <RGB Palette>, uncheck other palettes.

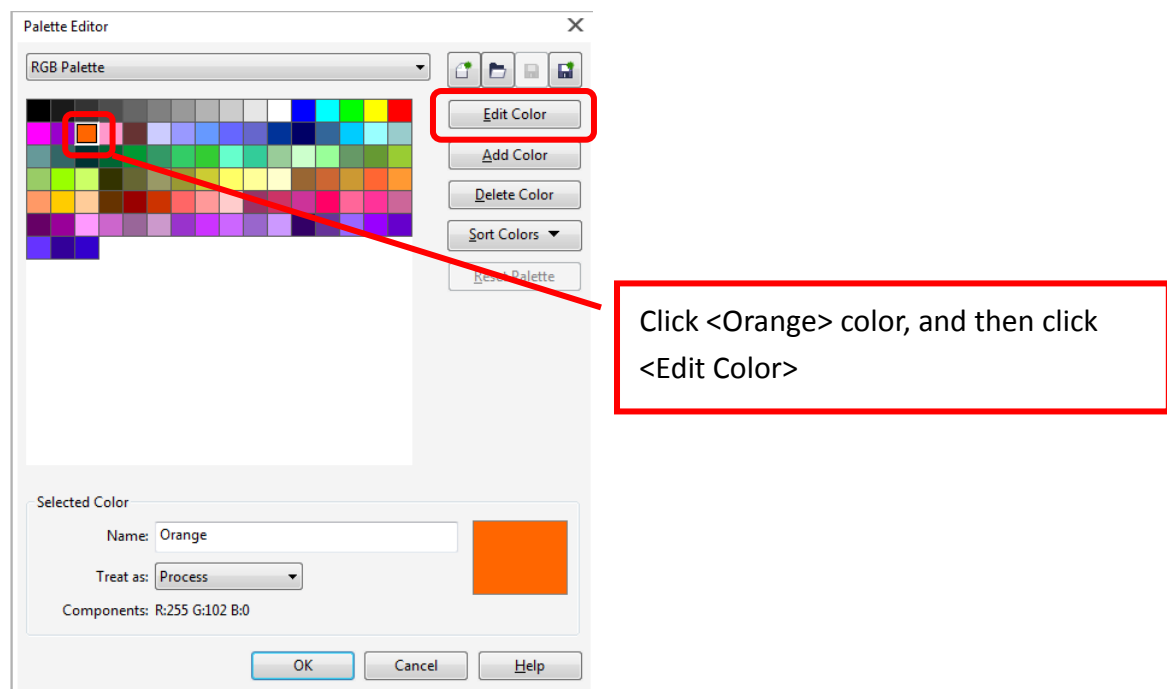




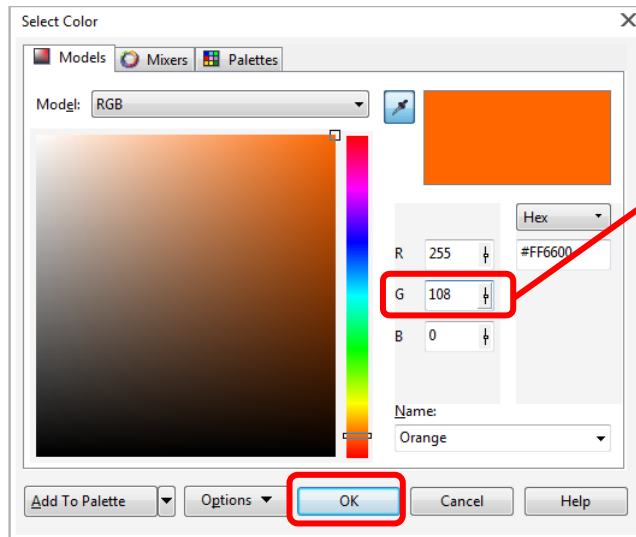
Click <Orange> color in the palette. It will show a window, it depends on your needs to check the options, then you can close it.



Click the ▲, and then click <Edit Color>



Click <Orange> color, and then click <Edit Color>

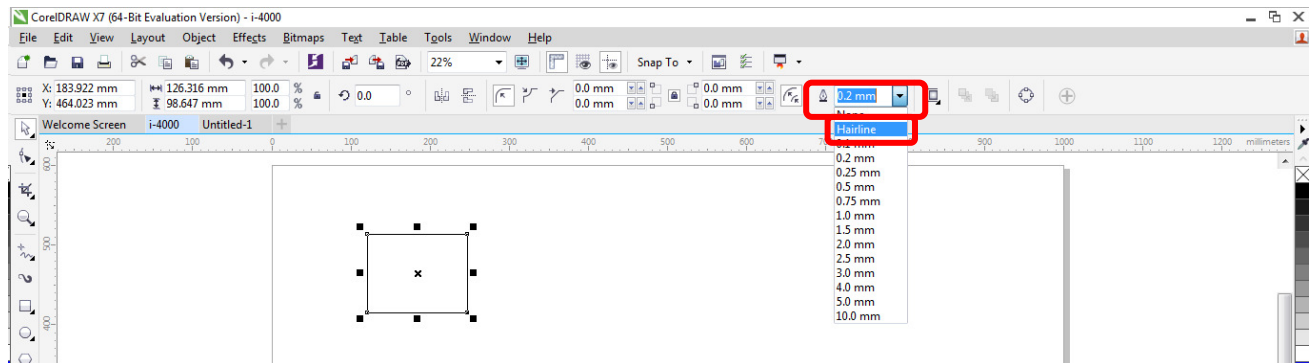


Change G value to 108.

3. Cutting setting

Generally printer driver will recognize the finest line width as cutting path. For CorelDRAW, please set up as the following window.

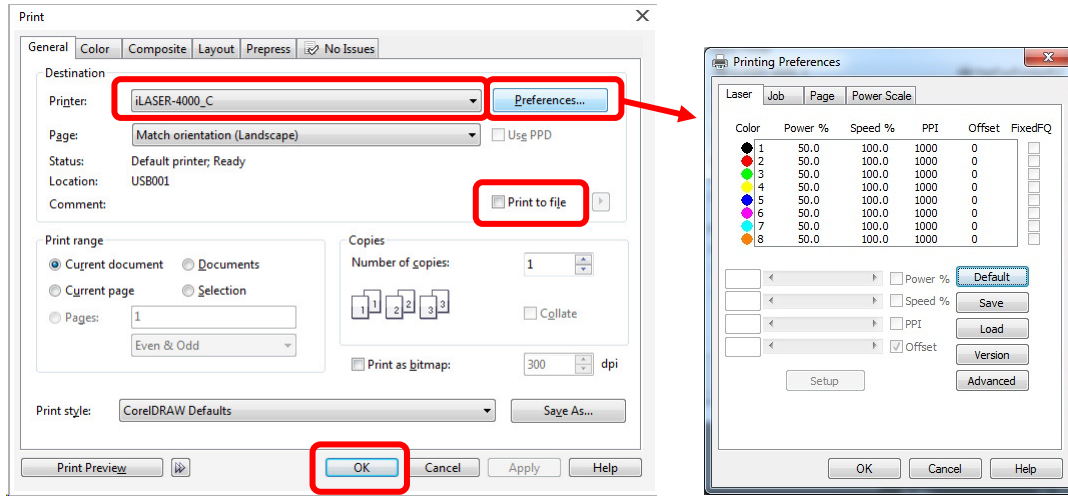
Select your cutting path, change the outline width to <Hairline>.





4. Print out

Go to File / Print..., change the printer to laser printer driver.



Click <Preferences...>, it will show the <Printing Preferences>, you can setup more detail of the parameters for laser cutting or engraving.

If you check <Print to file> box, you will print the result to a file, the extension file name is prn. If you don't check it, it will directly send file to the machine.