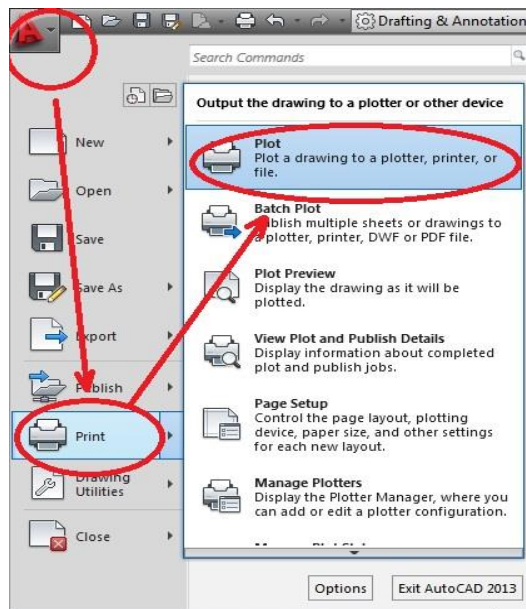


## AutoCAD Output Setup

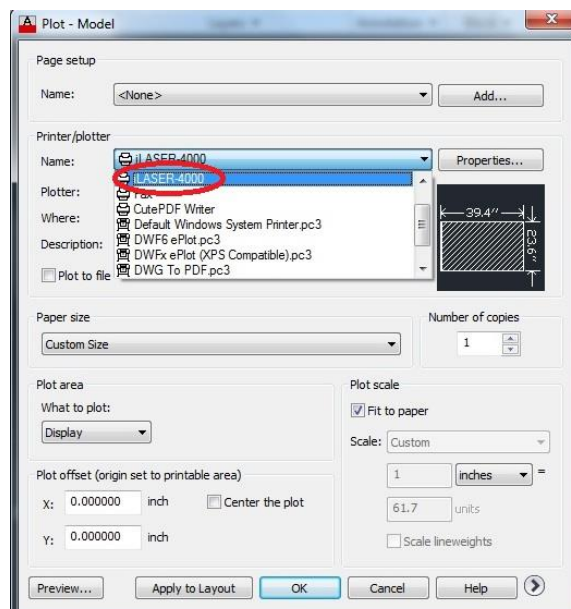
If you have a AutoCAD drawing, and you want to print it out laser machine from LTT. Here is an easy process for you to follow.

### Print Setting

Select the **[A]** mark or **[File]** at left-up corner then select **[Print]**→**[Plot]**. (Or you can press [Ctrl]+[P])

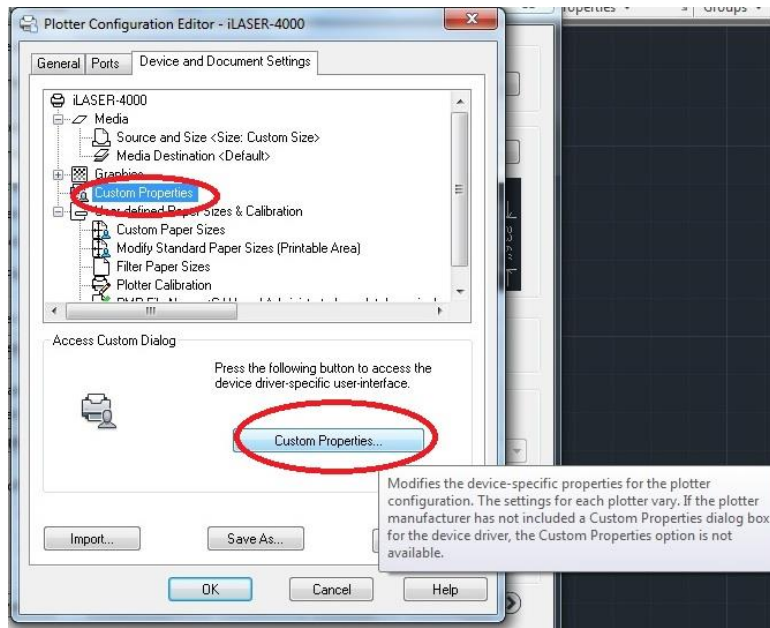


When the **[Plot]** window shows, select printer driver and click **[Properties]** button.

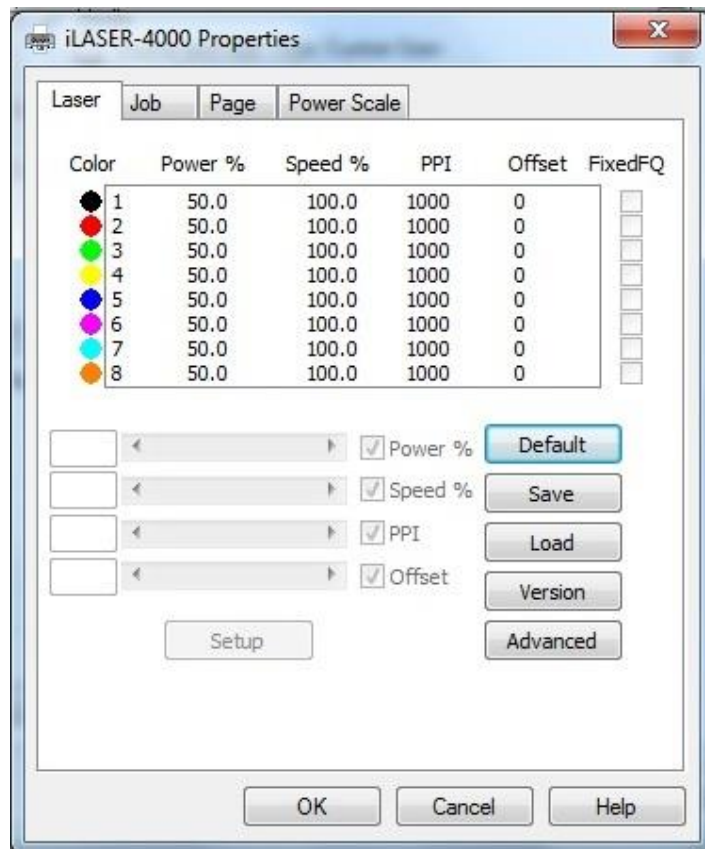




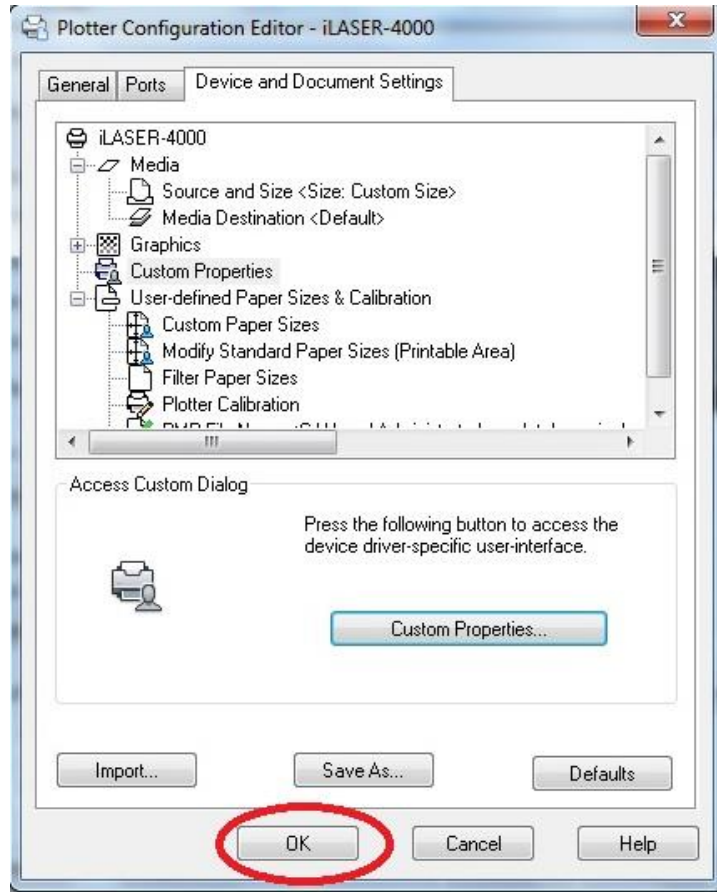
Select [**Custom Properties**] and click [**Custom Properties**] button at middle.



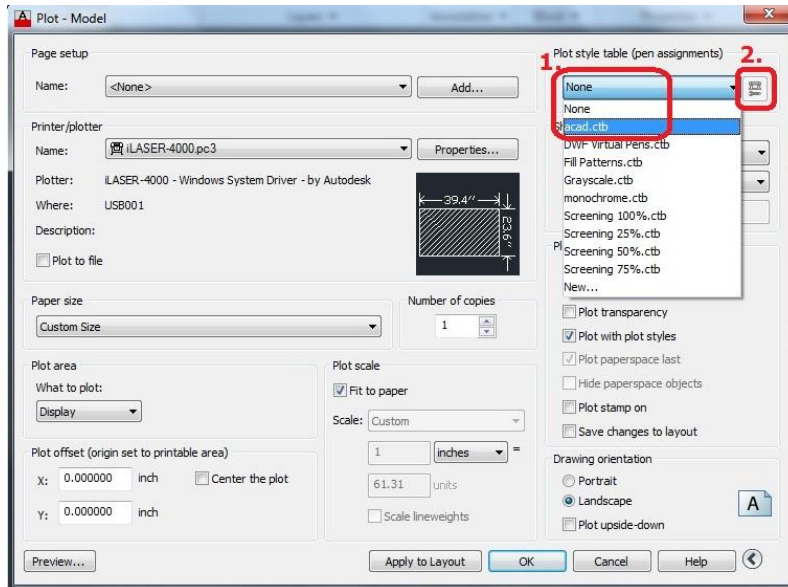
Modify Laser settings if need. Press [**OK**] to finish driver setting.



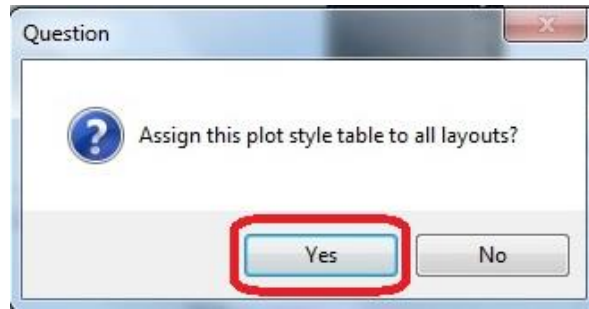
Press [**OK**] to back to print setting.



Select [**Plot style table**] to **acad.ctb**. Press [**Edit**] button.

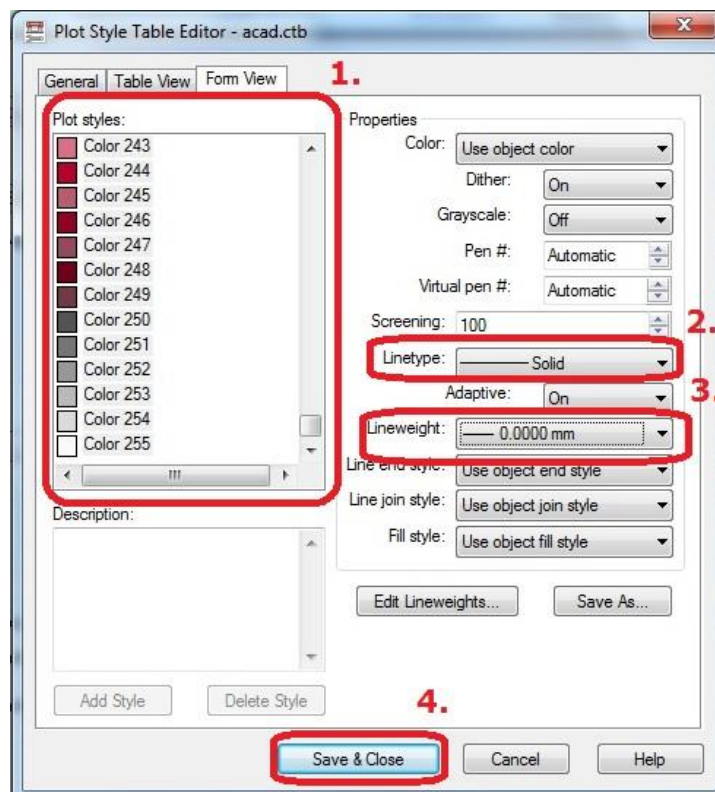


Press [**Yes**] button to continue.

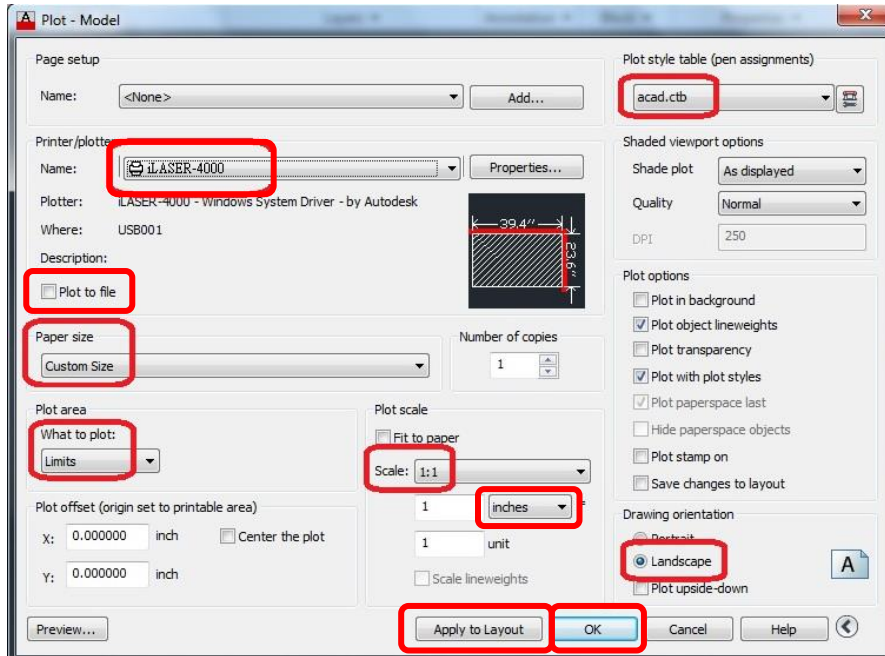


Use **[Shift]** key to help selecting all colors in **[Plot styles]** list. Set the **[Linetype]** to **[solid]** and the **[Lineweight]** to **[0.0000 mm]** Then press **[Save& close]** button to continue.

(You only have to do this change once, next time you can just select **[Plot style table]** to **acad.ctb**.)



Switch to **[Plot Settings]** tab. Select the **[Plot scale]** to **[1:1]**. Select the **[Plot area]** to **[Limits]**. The **[Drawing orientation]** should be set to **[Landscape]**. Then Press **[OK]** to send file to machine.



**Print to file** : If you check it, you can print the drawing to a \*.plt file. All your cutting lines and power / speed parameters settings will be stored into this file. You can use LTT Products Tool to send this file to machine. If you will do the same job next time, you can just send \*.plt file to machine, and you don't have to open the drawing again.

**Plot area** : You can choose Window, and click two point of your drawing to setup the area that you want to print. Or You can draw a rectangle as the working area of your machine ( For example, i.Laser 4000, you can draw a 1000x600 mm rectangle, then you can put the drawing contents in this rectangle. And you can print the rectangle as Window to print the contents.)

**Apply to Layout** : After you setup all the settings, you can click it. It will help you to save the layout setting into the drawing. When you open this drawing again, you can use the same layout again.