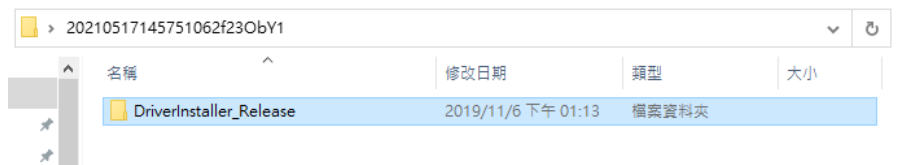


## DriverInstaller User Guide

1. It is an one click installation and un-installation program. You don't have to run ltt.cer or other setting process, you can just click Install or uninstall button, this software will do everything for you. However, the .NET Framework version must be updated to the most recent version, or the program may not work as it ought to be. Please go to the Microsoft download link of .NET Framework as shown afterward.

<https://www.microsoft.com/net/download/Windows/run>.





2. De-compress the RAR file “DriverInstaller\_Release” and place them in the same directory where the drivers are located.



Or you can download from the following link.

[https://www.lttcorp.com/upload/2021\\_05\\_172/20210517145751062f23ObY1.zip](https://www.lttcorp.com/upload/2021_05_172/20210517145751062f23ObY1.zip)

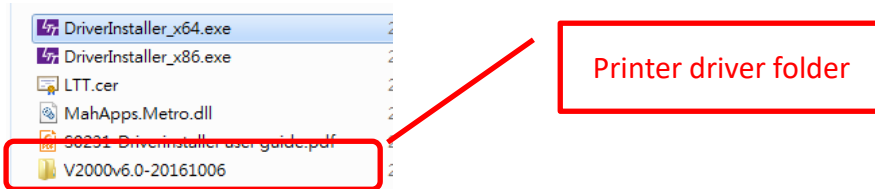
3. There are total four files inside the Driverinstaller.RAR.

 DriverInstaller_x64.exe	2018/6/13 上午 10:36
 DriverInstaller_x86.exe	2018/6/13 上午 10:36
 LTT.cer	2013/7/8 下午 08:04
 MahApps.Metro.dll	2017/4/13 下午 09:21

- Driverinstaller\_x64.exe is for 64 bits Windows

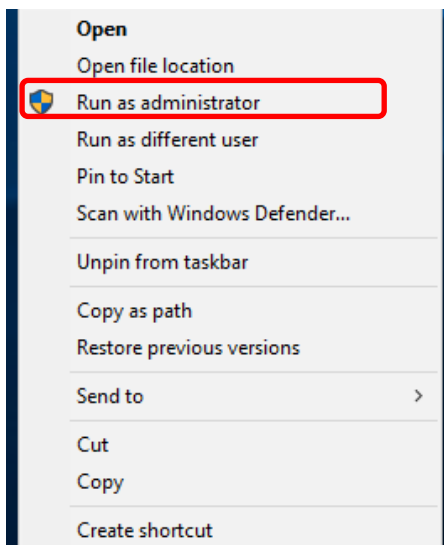


- Driverinstaller\_x86.exe is for 32 bits Windows
  - LTT.cer and MahApps.Metro.dll are for installation reference.
4. Put the driver folder into the same directory of driverInstaller.

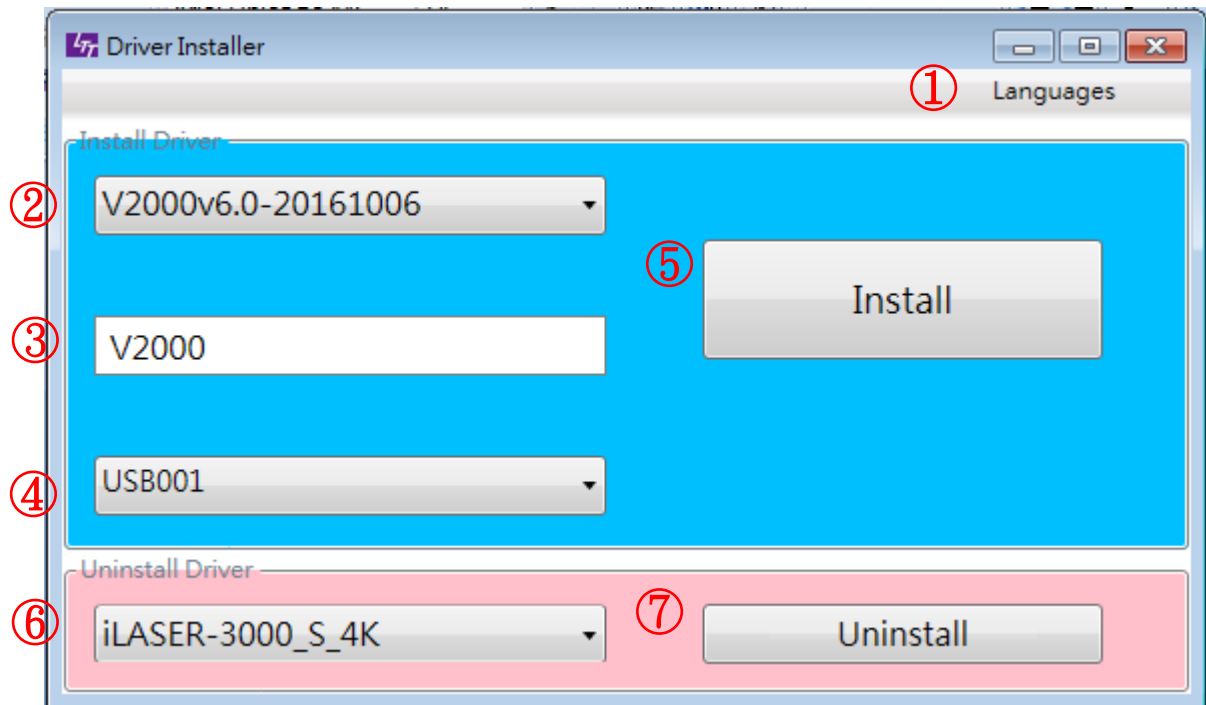


5. Run the DriverInstaller program according to your Windows 64/32 bits.

**You must have the administrator right of this computer.**



6. The default language version is Chinese. Please change it to the your language by the language options ① from the menu.
7. Program function description



- ① : Choose language.
- ② : Drivers folder list. When the driver folder are put in the same directory of Driverinstall.exe, it will list all these drivers.
- ③ : Name of machine model (Printer Name).
- ④ : Printer port setting.
- ⑤ : Click to install the driver showed in drop down list ②.
- ⑥ : Installed driver list in Windows.
- ⑦ : Click to uninstall the driver showed in drop down list ⑥.

## 8. FAQ

Q1, Can not open driverinstaller.

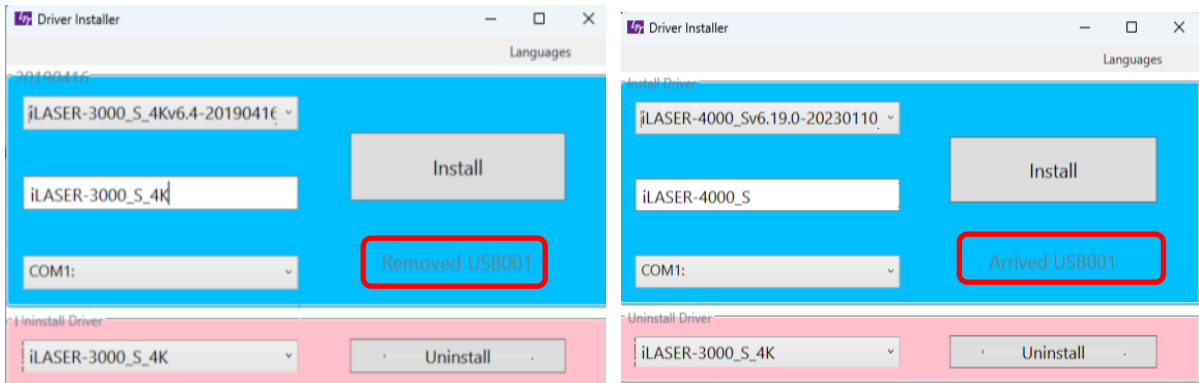
A1, Please make sure all the files are in the same directory.

Q2, I don't see any driver name showed in drop down list ②.

A2, Please put the driverinstaller related files and drivers folder in the same directory.

### New function.

1. DriverInstaller will automatically modify Windows registry for lager area and higher resolution models. So you don't have to do it again.
2. When the USB cable is connected with LTT laser machine, you plug or unplug the other end of USB cable from computer's USB port, DriverInstaller will show the USB port number. It would help you to setup the port of the printer driver.



You must run Driver Installer first, and power on the machine, then plug and unplug the USB cable; it will show Port number information.

3. How to set up the USB port.

If you don't see the USB port number information, you can go to Device Manager to check Universal Serial Bus controllers. Right-click USB Printing Support, check the Properties/Details/Bus relations. The last three number is the USB port number for your printer driver.

